

BIG

YOUR NAME _____

CURRICULUM UNLIKELY HEROES

BIG IDEA WHEREVER YOU GO

BIG WORD "God has said, "I will never leave you; I will never abandon you." So we can be sure when we say, "I will not be afraid, because the Lord is my helper. People can't do anything to me." Hebrews 13:5b-6 (NCV)

LOYALTY MEANS WE STICK TOGETHER THROUGH GOOD TIMES AND BAD. DRAW A LINE BETWEEN THE THINGS THAT GO TOGETHER.



RUTH FOLLOWED NAOMI. CAN YOU FOLLOW THE PATTERNS?



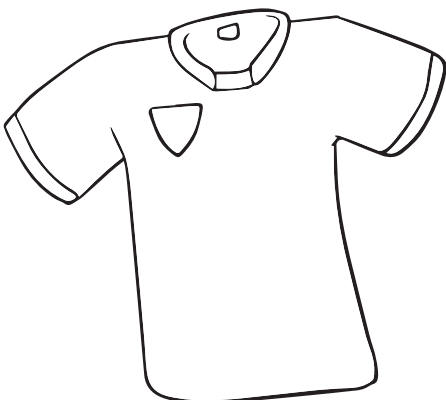
CIRCLE THE SYMBOL THAT FOLLOWS NEXT? OR OR



WHICH IS MISSING? OR OR

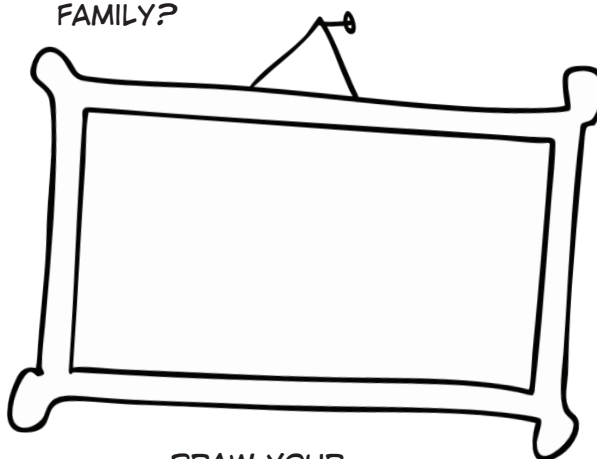
WHO ARE YOU LOYAL TO?

SPORTS TEAM?



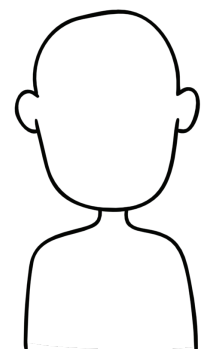
COLOUR IN THE JERSEY WITH YOUR TEAM'S COLOURS

FAMILY?



DRAW YOUR FAMILY

FRIENDS?



DRAW YOUR FRIEND

BIG POINT TODAY I LEARNT THAT...

PARENTS!

Use these questions to kick start discussion with your children!

1. What does loyal mean?
2. Who was Ruth loyal to?
3. How can we be loyal?