

YOUR NAME

BIG

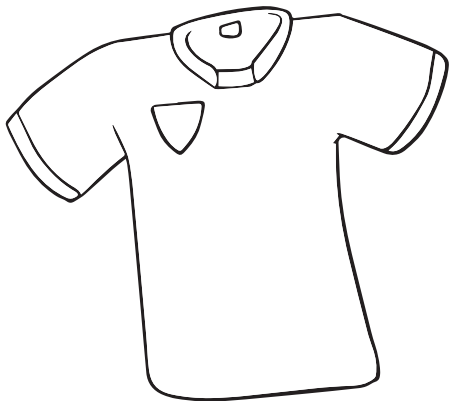
CURRICULUM UNLIKELY HEROES

BIG IDEA WHEREVER YOU GO

BIG WORD "God has said, "I will never leave you; I will never abandon you." So we can be sure when we say, "I will not be afraid, because the Lord is my helper. People can't do anything to me." Hebrews 13:5b-6 (NCV)

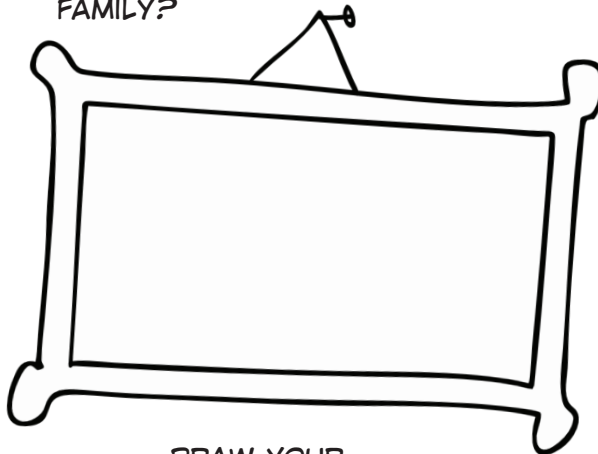
WHO ARE YOU LOYAL TO?

SPORTS TEAM?



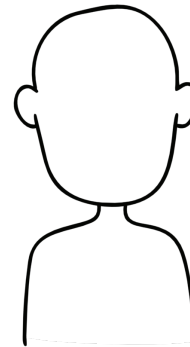
COLOUR IN THE JERSEY WITH YOUR TEAM'S COLOURS

FAMILY?



DRAW YOUR FAMILY

FRIENDS?



DRAW YOUR FRIEND

RUTH FOLLOWED NAOMI. CAN YOU FIGURE OUT WHAT FOLLOWS IN EACH OF THESE PATTERNS?



DRAW WHAT FOLLOWS NEXT



CIRCLE THE SYMBOL THAT FOLLOWS NEXT?

_____ OR _____ OR _____



WHICH IS MISSING?

_____ OR _____ OR _____

BIG POINT
TODAY I LEARNT THAT...
HEROES ARE LOYAL

PARENTS!
Use these questions to kick start discussion with your children!
1. What does loyal mean?
2. Who was Ruth loyal to?
3. How can we be loyal?